

TECHNICAL SPECIFICATIONS

Country of Origin:	Australia	Colours:	16 Standard
Yarn:	100% Nylon	Surface Texture:	Patterned Cut Pile
Gauge:	39.4/10cm (1/10th Gauge)	Total Product Thickness:	7 (+/- 1.0)mm
Pile Height:	4.5 (+/- 1.0)mm	Pile Weight:	576.00g/m ² (17oz)
Backing:	Action Bac®	Installation Method:	Direct Stick Recommended
Type:	Commercial Broadloom	Roll Width:	1.96
Pattern Repeat:	Not Applicable		

PERFORMANCE

Anti-Static:	(AATCC 134) <3.5KV at 21°C & 20% Relative Humidity
Flammability:	Meets the requirements of NCC Spec. C1.10 relating to fire hazard properties for flooring in Class 2-9 buildings (including health and aged care buildings)~
Colourfast to light:	(ISO 105-B-02-1994) 5-6
Light Reflectance:	Available on Request
Stain Resistance:	Stain Warden®
Biocontaminant Control:	Bioshield® Antimicrobial Control
ACCS Rating:	Residential Extra Heavy Duty & Stairs - 6 Star, Contract Extra Heavy Duty - 4 Star
Contract Guarantee:	7 Year Contract Guarantee Available on Request*
Recommended Adhesive:	Refer to our GH Commercial Adhesive Guide www.ghcommercial.com

SUSTAINABILITY

PVC Minimisation:	PVC Free
Indoor Air Quality:	Green Building Council Compliant for VOC emission rate limits
Product Transparency:	Declare Red List Free, Declare Red List Free
Green Star:	Environmental Certification Scheme (ECS). Level 4+. Achieves 12+ Points meeting Best Practice Requirements - Certificate #25287
Accreditation:	Manufactured under a quality, environmental and health and safety system certified and complying with ISO 9001, ISO 14001 and ISO 45001 by accredited certification bodies.

AVAILABILITY

Backing Options: Quick Comfort® cushion backing, Health Bac® impervious healthcare backing



Australian Made



Declare® Red List Free



ISO 9001 Quality Management System



ISO 14001 Environment Management System



ISO 45001 OHS Management System



Patterned Cut Pile

Tonality



Designer
Jet®



Designer Jet

ECS Level 4+



PVC Free



Green Building Council



Residential Extra Heavy
Duty & Stairs - 6 Star



Contract Extra Heavy Duty
- 4 Star

Declare.

Declare.

Declare

Designer Jet Sheet on
Action Bac

Tonality



1500
Jasper



1800
Bronzite



2300
Amethyst



3200
Citrine



5300
Quartz



5600
Topaz



6300
Amber



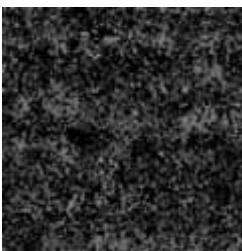
6800
Garnet



7300
Crystal



7700
Slate



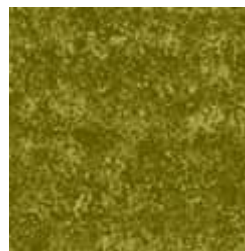
7900
Anthracite



8300
Tanzanite



8800
Sapphire



9400
Olivine



9600
Emerald



9800

Tonality

Aquamarine



Tonality



Specifications and colourations are subject to manufacturing tolerances. As part of the GH Commercial continuous improvement program, GH Commercial reserves the right to change the specifications of or delete colours of this product without notice. While all care is taken, product images may vary in colour due to possible printing process variations. Images do not seek to duplicate the exact visual appearance, but serve merely as a guide or point of reference.

All GH Commercial carpets must be installed in accordance with the latest AS2455 and any relevant GH Commercial Carpet Installation Instructions. Chair pads are recommended under office chairs with roller castors to preserve appearance retention, act as a deterrent toward delamination and to prevent premature or accelerated wear. Walk-off tiles from the Tuff Stuff II Collection are recommended at entryways to reduce soiling. ~Test results and certificates are available on request.

*This warranty is in addition to any rights consumers may have under Australian consumer laws. Terms and conditions apply - for full information in respect to the scope of the guarantee please contact your GH Commercial Account Manager or our Head Office.