

TECHNICAL SPECIFICATIONS

Country of Origin:	Australia	Colours:	6 Standard
Yarn:	100% Nylon	Surface Texture:	Patterned Textured Loop Pile
Gauge:	47.2/10cm (1/12th Gauge)	Total Product Thickness:	6.5 (+/- 1.0)mm
Pile Height:	4 (+/- 1.0)mm	Pile Weight:	750g/m ² (22oz)
Backing:	Enviro Bac®	Size:	250mm x 1000mm
Installation Method:	Direct Stick	Notes:	Each box contains significant colour variation.
Type:	Carpet Tiles and Planks	Units Per Box:	18.00
m ² per box:	4.5	Pattern Repeat:	Not Applicable

PERFORMANCE

Anti-Static:	(AATCC 134) $\leq 3.5KV$ at 21°C & 20% Relative Humidity
Flammability:	CRF 6.8kW/m ² (Direct Stick)~
Colourfast to light:	(ISO 105-B-02-1994) 5-6
Light Reflectance:	Available on Request
Stain Resistance:	Stain Warden®
Biocontaminant Control:	Bioshield® Antimicrobial Control
ACCS Rating:	Contract Extra Heavy Duty - 4 Star
Smoke Value:	295% minutes (Direct Stick)

SUSTAINABILITY

PVC Minimisation:	PVC Free
Indoor Air Quality:	Green Building Council compliant for VOC emission rate limits
Product Transparency:	Declare Red List Free
Green Star:	Environmental Certification Scheme (ECS). Level 4+. Achieves 12+ Points meeting Best Practice Requirements - Certificate #18081
Accreditation:	Manufactured under a quality, environmental and health and safety system certified and complying with ISO 9001, ISO 14001 and ISO 45001 by accredited certification bodies.

AVAILABILITY

Size Options:	500mm x 500mm carpet tile
Backing Options:	Enviro Bac Plus® cushion backing, Enviro Bac Lite® cushion backing
Other Options:	Patterned Cut Pile 17oz, Cut & Loop Pile 23oz, Patterned Cut Pile 35oz

Sequence



Declare.



Australian Made



PVC Free



BPA Free



Pthalate Free



Contract Extra Heavy Duty
- 4 Star

Designer Jet Carpet Tiles
& Planks on Enviro Bac
and Enviro Bac Plus



Green Building Council



ISO 9001 Quality
Management System



ISO 14001 Environment
Management System



AS 4801

Designer
Jet®

Designer Jet



Patterned Textured Loop
Pile



Mid Range

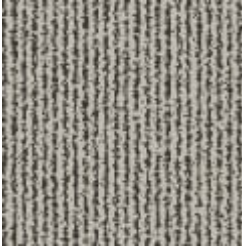


Declare® Red List Free

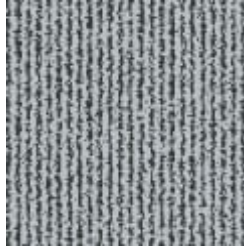


ECS Level 4+

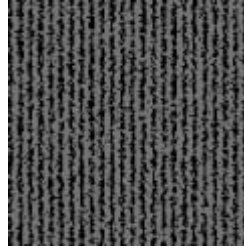
Sequence



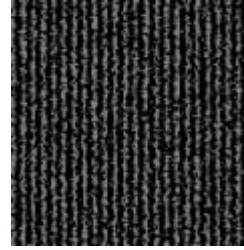
5700
Rhythm



7300
Movement



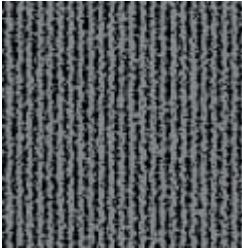
7500
Technique



7800
Form



7806
Freestyle



8400
Balance

Sequence



Specifications and colourations are subject to manufacturing tolerances. As part of the GH Commercial continuous improvement program, GH Commercial reserves the right to change the specifications of or delete colours of this product without notice. While all care is taken, product images may vary in colour due to possible printing process variations. Images do not seek to duplicate the exact visual appearance, but serve merely as a guide or point of reference.

All GH Commercial carpet tiles and planks must be installed in accordance with AS2455 Parts 1 & 2 (latest version) and the GH Commercial Carpet Tile/Plank Installation Instructions. Chair pads are recommended under office chairs with roller castors to preserve appearance retention, act as a deterrent toward delamination and to prevent premature or accelerated wear. Walk-off tiles from the Tuff Stuff II Collection are recommended at entryways to reduce soiling. ~Test results and certificates are available on request.

*Guarantee is in addition to any rights consumers may have under Australian consumer laws. Terms and conditions apply - for full information in respect to the scope of the guarantee please contact your GH Commercial Account Manager or our Head Office.