

Sandstone R10



TECHNICAL SPECIFICATIONS

Country of Origin:	China	Colours:	3 Standard
Total Product Thickness:	2mm	Installation Method:	Direct Stick
Notes:	Stocked locally in NZ for fast lead times	Type:	Vinyl Sheet Flooring
Finish:	Matte	Roll Width:	Width: 2m, Length: 20

PERFORMANCE

Flammability:	With 2mm Damtec®resilient underlay: (EN ISO 9239) 8.4kW/m ² - 114%min.
Colourfast to light:	ISO 105 B-02 ≥grade 6
Light Reflectance:	760 - 12.07 300 - 48.09
Classification:	(EN ISO 10874) Residential 23, Commercial 34, Industrial 43
Smoke Value:	EN ISO 9239: 60% min With 2mm Damtec®resilient underlay: 114%min
Dimensional Stability:	(ISO 23999) norm ≤ 0,40%
Residual Indentation:	(EN ISO 24343-1) ≥0.10mm
Castor Chair:	(EN ISO 4918) Suitable
Sound Reduction:	(EN ISO 717-2) ΔLw= 4dB
Slip Resistance:	(AS/NZ 4586-2013) P3, R10
Recommended Adhesive:	Refer to our GH Commercial Adhesive Guide www.ghcommercial.com
Static Load:	(EN 1815) ≤ 2kV (antistatic)
Chemical Resistance:	EN 423

SUSTAINABILITY

Indoor Air Quality:	(ASTM D5116-2017) Pass
Environmental Product Declaration:	(ISO14025-EN15084) Certified
Recycled Content:	10%
Accreditation:	Manufactured under a quality and environmental system certified and complying with ISO 9001 and ISO 14001 by an accredited certification body.



ISO 9001 Quality Management System



ISO 14001 Environment Management System



Affordable



Floorscore

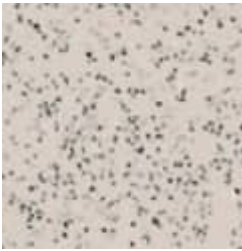


Waterproof



Waterproof Core

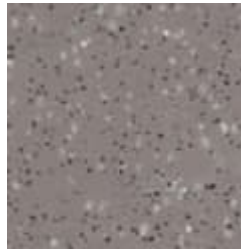
Sandstone R10



300
Pumice



PTS: All-over



500
Quartz



PTS: All-over



760
Ironsand



PTS: All-over

Sandstone R10



Specifications and colourations are subject to manufacturing tolerances. As part of the GH Commercial continuous improvement program, GH Commercial reserves the right to change the specifications of or delete colours of this product without notice. While all care is taken, product images may vary in colour due to possible printing process variations. Images do not seek to duplicate the exact visual appearance, but serve merely as a guide or point of reference.

Manufacturing Standards:

All specifications and colours are subject to manufacturing tolerances and may be changed or discontinued without notice. Product images are for reference only; actual colours may vary from samples due to printing variations, batch differences, and lighting conditions. All variations are within industry standards.

Natural Product Characteristics:

Hard flooring products may display natural variations in colour, grain, texture, and pattern between batches and individual planks or tiles. These variations are inherent characteristics of the product and do not constitute a manufacturing defect.

Water Resistant/Waterproof Flooring:

Water resistance and waterproof performance are subject to proper installation, ongoing maintenance, and compliance with local building codes and regulatory requirements.

Installation:

All hard flooring must be installed by a qualified professional in accordance with NZS AS 1884:2013, relevant referenced standards for moisture testing and subfloor preparation (e.g. AS/NZS 1080 where applicable), recognised industry best practice, and the applicable Godfrey Hirst installation instructions. Proper subfloor preparation, moisture management, and acclimatisation are essential to ensure product performance and longevity.

Maintenance:

Maintenance requirements vary by product type. Refer to the specific care and maintenance guidelines for your flooring product to ensure optimal performance and longevity.

Product-Specific Notes:

Timber: Nested/random lengths may occur. As this is a natural product, some boxes may include one 'nested' board (i.e. two boards comprising the quoted board length). All boxes will provide the coverage quoted.

Vinyl Sheet: Each colour has a specific pattern repeat and laying direction—refer to the Product Specification Sheet for details. Pay particular attention to the directional arrow to determine if the design should be installed in a standard or reverse direction. LRV indicates Light Reflectance Value, PR is Pattern Repeat, and PTS denotes Plank/Tile Size.

Warranty:

All Godfrey Hirst floors carry a comprehensive warranty supported by New Zealand after-sales service. As a New Zealand manufacturer, we recognise all consumer rights under the Consumer Guarantees Act 1993 and match any equivalent performance guarantee offered in the marketplace at the time of purchase. Commercial warranties are issued project-by-project with specific terms and conditions.

For detailed warranty information, installation guidelines, care instructions, and product characteristics, visit www.godfreyhirst.com or call 0800 500 210. For commercial project-specific warranty enquiries, contact your GH Commercial Account Manager. Test results and certificates available on request.