

## TECHNICAL SPECIFICATIONS

Country of Origin:	New Zealand	Colours:	5 Standard
Yarn:	80% Wool / 20% Synthetic	Surface Texture:	Cut Pile Plush
Gauge:	31.5/10cm (1/8th Gauge)	Total Product Thickness:	17.5 (+/- 1)mm
Pile Height:	14.5 (+/- 1)mm	Pile Weight:	2375.00g/m <sup>2</sup> (70oz)
Backing:	Jute	Installation Method:	Conventionally Laid
Type:	Residential Broadloom	Roll Width:	3.66
Pattern Repeat:	Not Applicable		

## PERFORMANCE

Anti-Static:	(AATCC 134) <math>\leq 3.5\text{KV}</math> at 21°C & 20% Relative Humidity
Flammability:	CRF 2.2kW/m <sup>2</sup> (Conventionally Laid)~
Stain Resistance:	Natural Wool Fibre Stain Resistance
ACCS Rating:	Residential Extra Heavy Duty & Stairs - 6 Star, Contract Medium Duty - 2 Star
Smoke Value:	750% minutes (Conventionally Laid)

## SUSTAINABILITY

PVC Minimisation:	PVC Free
Indoor Air Quality:	Green Building Council Compliant for VOC emission rate limits
Product Transparency:	Declare Red List Free
Green Star:	Environmental Certification Scheme (ECS). Level 4 - Certificate #14233
Accreditation:	Manufactured under a quality and environmental system certified and complying with ISO 9001 and ISO 14001 by an accredited certification body.



Made in New Zealand



Declare



Declare® Red List Free



PVC Free



Residential Extra Heavy Duty & Stairs - 6 Star



Contract Medium Duty - 2 Star



ECS Level 4



Green Building Council



ISO 9001 Quality Management System



ISO 14001 Environment Management System



Cut Pile Plush



Premium



Wool Blend

# Odyssey



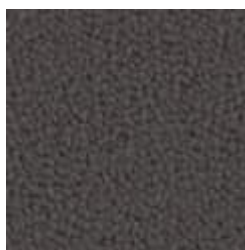
# Odyssey



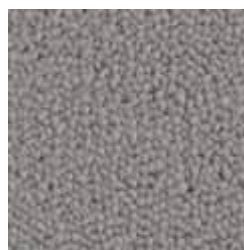
525  
Argos



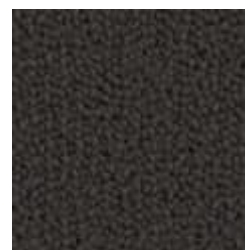
540  
Penelope



690  
Trojan



755  
Sparta



780  
Stella

# Odyssey



Specifications and colourations are subject to manufacturing tolerances. As part of the GH Commercial continuous improvement program, GH Commercial reserves the right to change the specifications of or delete colours of this product without notice. While all care is taken, product images may vary in colour due to possible printing process variations. Images do not seek to duplicate the exact visual appearance, but serve merely as a guide or point of reference.

All Godfrey Hirst carpets must be installed in accordance with the latest AS2455 and any relevant Godfrey Hirst Installation Instructions. ~Test results and certificates are available on request.

\*This product comes with a manufacturer's guarantee for new carpet installed indoors in owner occupied premises, if properly installed and maintained. This guarantee is in addition to consumers' rights under the statutory consumer guarantee provisions in the Australian Consumer Law, which may exceed the rights under this Guarantee. The amount recoverable under the guarantee decreases five years. For full information in respect to the scope and limitations of this guarantee, please refer to the full terms and conditions available from your retailer, by calling 1300 444 778, or by downloading from [www.godfreyhirst.com](http://www.godfreyhirst.com).