

Oceanic Sheet



TECHNICAL SPECIFICATIONS

Country of Origin:	Australia	Colours:	16 Standard
Yarn:	100% Nylon	Surface Texture:	Patterned Cut Pile
Gauge:	39.4/10cm (1/10th Gauge)	Total Product Thickness:	7 (+/- 1.0)mm
Pile Height:	4.5 (+/- 1.0)mm	Pile Weight:	576.00g/m ² (17oz)
Backing:	Action Bac®	Installation Method:	Direct Stick Recommended
Type:	Commercial Broadloom	Roll Width:	1.96
Pattern Repeat:	Pattern repeat varies per SKU. Contact your local GH Commercial Account Manager.		

PERFORMANCE

Anti-Static:	(AATCC 134) $\leq 3.5\text{KV}$ at 21°C & 20% Relative Humidity
Flammability:	CRF 8.4kW/m ² (Direct Stick)#
Colourfast to light:	(ISO 105-B-02-1994) 5-6
Light Reflectance:	Available on Request
Stain Resistance:	Stain Warden®
Biocontaminant Control:	Bioshield® Antimicrobial Control
ACCS Rating:	Contract Extra Heavy Duty - 4 Star
Smoke Value:	39% minutes (Direct Stick)
Recommended Adhesive:	Refer to our GH Commercial Adhesive Guide www.ghcommercial.com

SUSTAINABILITY

PVC Minimisation:	PVC Free
Indoor Air Quality:	Green Building Council compliant for VOC emission rate limits
Product Transparency:	Declare Red List Free
Green Star:	Environmental Certification Scheme (ECS). Level 4+. Achieves 12+ Points meeting Best Practice Requirements - Certificate #20033
Accreditation:	Manufactured under a quality, environmental and health and safety system certified and complying with ISO 9001, ISO 14001 and ISO 45001 by accredited certification bodies.

AVAILABILITY

Backing Options: Quick Comfort® cushion backing



Australian Made

Declare.

Designer Jet Sheet on Action Bac



PVC Free



BPA Free



Pthalate Free



Contract Extra Heavy Duty - 4 Star

Oceanic Sheet



ECS Level 4



Green Building Council



ISO 9001 Quality Management System



ISO 14001 Environment Management System



AS 4801

Designer Jet®

Designer Jet



Patterned Cut Pile



Declare® Red List Free



Affordable

Oceanic Sheet



560
Turtle

PR: 196cm x 178cm



580
Surface

PR: 196cm x 196cm



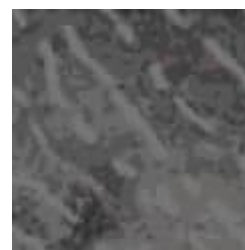
590
Zooks

PR: 196cm x 205cm



740
Seastar

PR: 196cm x 396cm



775
Ballina

PR: 196cm 282cm



780
Blackfish

PR: 196cm x 396cm



785
Lindeman

PR: 196cm x 275cm



790
Angel

PR: 196cm x 196cm



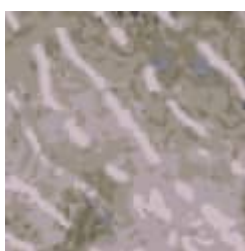
830
Daydream

PR: 196cm x 197cm



840
Backwash

PR: 196cm x 396cm



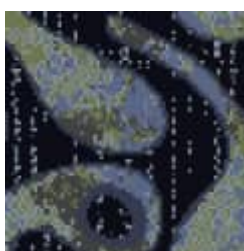
850
Pearlsa

PR: 196cm x 282cm



860
Aquaria

PR: 196cm x 199cm



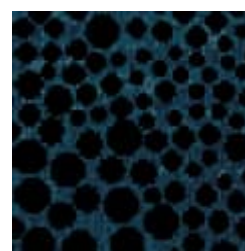
870
Sampa

PR: 196cm x 205cm



880
Urchin

PR: 196cm x 396cm



890
Atomic

PR: 196cm x 222cm



960

Oceanic Sheet



Brampton

PR: 196cm x 288cm

Oceanic Sheet



Specifications and colourations are subject to manufacturing tolerances. As part of the GH Commercial continuous improvement program, GH Commercial reserves the right to change the specifications of or delete colours of this product without notice. While all care is taken, product images may vary in colour due to possible printing process variations. Images do not seek to duplicate the exact visual appearance, but serve merely as a guide or point of reference.

All GH Commercial carpets must be installed in accordance with the latest AS2455 and any relevant GH Commercial Carpet Installation Instructions.
Chair pads are recommended under office chairs with roller castors to preserve appearance retention, act as a deterrent toward delamination and to prevent premature or accelerated wear. Walk-off tiles from the Tuff Stuff II Collection are recommended at entryways to reduce soiling.
~Test results and certificates are available on request.

*This warranty is in addition to any rights consumers may have under Australian consumer laws. Terms and conditions apply - for full information in respect to the scope of the guarantee please contact your GH Commercial Account Manager or our Head Office.