

# Metropol 1500



## TECHNICAL SPECIFICATIONS

Colours:	12 Standard	Total Product Thickness:	6.5mm
Backing:	1.5mm Acoustic Backing	Size:	228mm x 1500mm
Installation Method:	Uniclic®	Type:	Hybrid Flooring
Wear Layer:	0.5mm	Units Per Box:	6 boards
m <sup>2</sup> per box:	2.052	m <sup>2</sup> per pallet:	123.12
Finish:	Matte	Surface:	Embossed
Profile:	Micro Bevel	Substrate Layer:	Trigon® Core Technology (Limestone Composite)
Top Layer:	Decorative Film & Wear Layer	Protective Coating:	PUR
Quickship AU:	Alabaster, Burnt Umber, Brass Oak, Apple-Box Gum, Marble Spotted Gum, Burl Oak, Fallow Oak, Platinum Grey, Pepper Oak, Silhouette Oak	Quickship WA:	Alabaster, Burnt Umber, Sable Oak, Cornsilk, Brass Oak, Apple-Box Gum, Marble Spotted Gum, Burl Oak, Fallow Oak, Platinum Grey, Pepper Oak, Silhouette Oak

## PERFORMANCE

Flammability:	(EN ISO 9239) CRF 11.1kW/m <sup>2</sup>
Colourfast to light:	(EN ISO 105-B02) ≥6
Light Reflectance:	Available on Request
Smoke Value:	(EN ISO 9239) 210% minutes
Dimensional Stability:	(ISO 23999) Length: 0.0, Width: 0.0, Curling: 0.0
Abrasion Rating:	(EN 660-2) Group T
Sound Reduction:	Please refer to Godfrey Hirst Acoustic Performance specification sheet
Slip Resistance:	(AS 4586) P3

## SUSTAINABILITY

Indoor Air Quality:	Green Building Council Compliant for VOC emission rate limits
Accreditation:	Manufactured under a quality and environmental system certified and complying with ISO 9001 and ISO 14001 by an accredited certification body.



Micro Bevel Edge



Matte Finish



Mid Range



Codemark Certified For Metropol Hybrid Flooring



ISO 9001 Quality Management System



ISO 14001 Environment Management System

# Metropol 1500



Trigon Core Technology



Celebrating Australian Species



Waterproof Surface



Waterproof Core



Codemark Certified Waterproof

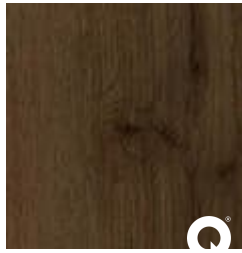


ECS Level 2

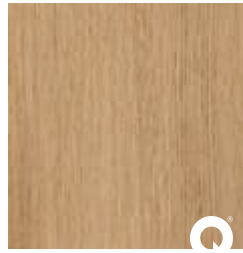
# Metropol 1500



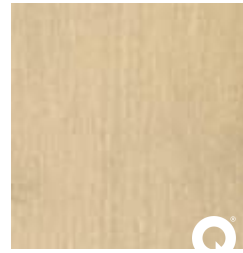
100  
Alabaster



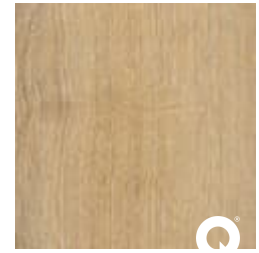
180  
Burnt Umber



300  
Sable Oak



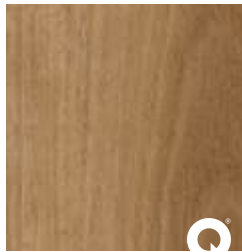
500  
Cornsilk



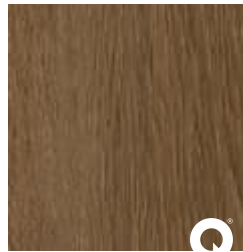
520  
Brass Oak



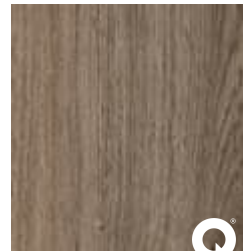
545  
Apple-Box Gum



555  
Marble Spotted Gum



560  
Burl Oak



580  
Fallow Oak



700  
Platinum Grey



720  
Pepper Oak



790  
Silhouette Oak

# Metropol 1500



Specifications and colourations are subject to manufacturing tolerances. As part of the GH Commercial continuous improvement program, GH Commercial reserves the right to change the specifications of or delete colours of this product without notice. While all care is taken, product images may vary in colour due to possible printing process variations. Images do not seek to duplicate the exact visual appearance, but serve merely as a guide or point of reference.

All Godfrey Hirst hybrid floors products must be installed in accordance with relevant Australian Standards and in conjunction with the Godfrey Hirst Hybrid Flooring Installation Instructions.

\*Terms and conditions apply to all commercial warranties - contact your GH Commercial Account Manager.

^ Subject to proper installation, maintenance and local building code/regulatory approval.