

Macro Bloom II



TECHNICAL SPECIFICATIONS

Country of Origin:	Australia	Colours:	9 Standard
Yarn:	Duracolor® Tricolor Solution Dyed Nylon	Surface Texture:	Patterned Textured Loop Pile
Gauge:	47.2/10cm (1/12th Gauge)	Total Product Thickness:	7.5 (+/- 1.0)mm
Pile Height:	5 (+/- 1.0)mm	Pile Weight:	848.00g/m ² (25oz)
Backing:	Enviro Bac®	Size:	304.8mm x 914.4mm
Installation Method:	Half-Lap, Plank Half-Lap, Brick Ashlar, Random, Herringbone, Basket Weave	Type:	Carpet Tiles and Planks
Units Per Box:	14	m ² per box:	3.902
m ² per pallet:	105.35	Pattern Repeat:	Not Applicable

PERFORMANCE

Anti-Static:	(AATCC 134) $\leq 3.5KV$ at 21°C & 20% Relative Humidity
Flammability:	Meets the requirements of NCC Spec. C1.10 relating to fire hazard properties for flooring in Class 2-9 buildings~
Colourfast to light:	(ISO 105-B-02-1994) 6-7
Light Reflectance:	Available on Request
Stain Resistance:	Duracolor® Tricolor - Permanent, Built into fibre
ACCS Rating:	Contract Extra Heavy Duty - 4 Star
Recommended Adhesive:	Refer to our GH Commercial Adhesive Guide www.ghcommercial.com

SUSTAINABILITY

PVC Minimisation:	PVC Free
Indoor Air Quality:	Green Building Council compliant for VOC emission rate limits
Product Transparency:	Declare Red List Free
Green Star:	Environmental Certification Scheme (ECS). Level 4 - Certificate #22243
Accreditation:	Manufactured under a quality, environmental and health and safety system certified and complying with ISO 9001, ISO 14001 and ISO 45001 by accredited certification bodies.

AVAILABILITY

Backing Options: Enviro Bac Plus® cushion backing



Australian Made



SDN Carpet Tiles and Planks on Enviro Bac and Enviro Bac Plus



Contract Extra Heavy Duty - 4 Star



ECS Level 4



ISO 9001 Quality Management System



ISO 45001 OHS Management System

Macro Bloom II



ISO 14001 Environment
Management System



PVC Free



Green Building Council



Duracolor® TriCor SDN



Patterned Textured Loop
Pile



Premium



Declare® Red List Free



Pattern Perfect Carpet Tile
with Enviro Bac®

Macro Bloom II



831
Gold Dust Bark



832
Sunburst Bark



837
Moonglow Bark



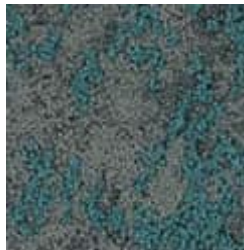
847
Velvet Snow Bark



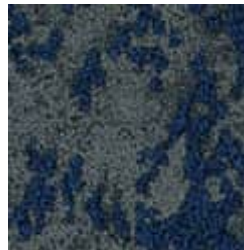
856
Jewel Leaf Bark



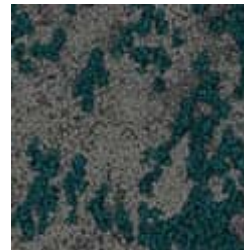
937
Map Rock Stone



945
Sky Shield Stone



975
Felted Fringe Stone



976
Drifted Root Stone

Macro Bloom II



Specifications and colourations are subject to manufacturing tolerances. As part of the GH Commercial continuous improvement program, GH Commercial reserves the right to change the specifications of or delete colours of this product without notice. While all care is taken, product images may vary in colour due to possible printing process variations. Images do not seek to duplicate the exact visual appearance, but serve merely as a guide or point of reference.

All GH Commercial carpet tiles and planks must be installed in accordance with AS2455 Parts 1 & 2 (latest version) and the GH Commercial Carpet Tile/Plank Installation Instructions. Chair pads are recommended under office chairs with roller castors to preserve appearance retention, act as a deterrent toward delamination and to prevent premature or accelerated wear. Walk-off tiles from the Tuff Stuff II Collection are recommended at entryways to reduce soiling. ~Test results and certificates are available on request.

*Guarantee is in addition to any rights consumers may have under Australian consumer laws. Terms and conditions apply - for full information in respect to the scope of the guarantee please contact your GH Commercial Account Manager or our Head Office.