

Limestone Coast



TECHNICAL SPECIFICATIONS

Country of Origin:	Australia	Colours:	11 Standard
Yarn:	100% Nylon	Surface Texture:	Patterned Textured Loop Pile
Gauge:	47/10cm (1/12th Gauge)	Total Product Thickness:	6.5 (+/- 1.0)mm
Pile Height:	4 (+/- 1.0)mm	Pile Weight:	750.00g/m ² (22oz)
Backing:	Enviro Bac®	Carpet Tiles & Planks Size:	500mm x 500mm
Installation Method:	Quarter Turn, Ashlar, Brick, Monolithic, Multi-Directional	Type:	Carpet Tiles and Planks
Units Per Box:	18.00	m ² per box:	4.5
m ² per pallet:	162		

PERFORMANCE

Anti-Static:	(AATCC 134) <3.5KV at 21°C & 20% Relative Humidity
Flammability:	Meets the requirements of NCC Spec. C1.10 relating to fire hazard properties for flooring in Class 2-9 buildings~
Light Reflectance:	Available on Request
Stain Resistance:	Stain Warden®
Biocontaminant Control:	Bioshield® Antimicrobial Control
Contract Guarantee:	15 Years Available on Request*
Recommended Adhesive:	Refer to our GH Commercial Adhesive Guide www.ghcommercial.com

SUSTAINABILITY

PVC Minimisation:	PVC Free
Indoor Air Quality:	Green Building Council Compliant for VOC emission rate limits
Product Transparency:	Declare Red List Free
Green Star:	Environmental Certification Scheme (ECS). Level 4 - Certificate #17119
Accreditation:	Manufactured under a quality, environmental and health and safety system certified and complying with ISO 9001, ISO 14001 and ISO 45001 by accredited certification bodies.

AVAILABILITY

Size Options:	250mm x 1000mm carpet plank
Backing Options:	Enviro Bac Plus® cushion backing, Enviro Bac Lite® cushion backing
Other Options:	Cut & Loop Pile 23oz, Patterned Cut Pile 35oz, Patterned Cut Pile 17oz

Designer Jet®



Designer Jet

Textured Loop Pile



ISO 9001 Quality Management System



ISO 14001 Environment Management System



ISO 45001 OHS Management System



Australian Made

Limestone Coast



Declare



Declare® Red List Free



PVC Free



Dreamtime Flooring

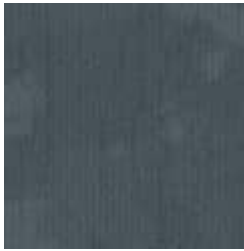


Mid Range



Designer Jet Carpet Tiles
with Enviro Bac®

Limestone Coast



1
Calcite



2
Little Blue Lake



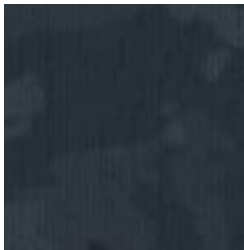
3
Sand Dune



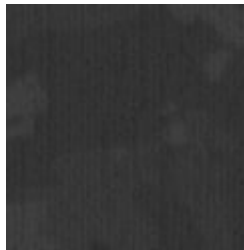
4
Red Dusk



5
Volcanic Ash



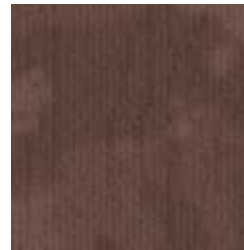
6
Blue Agate



7
Charcoal



8
Coastal Earth



9
Sugar Loaf



10
Limestone



11
Shell Grey

Limestone Coast



Specifications and colourations are subject to manufacturing tolerances. As part of the GH Commercial continuous improvement program, GH Commercial reserves the right to change the specifications of or delete colours of this product without notice. While all care is taken, product images may vary in colour due to possible printing process variations. Images do not seek to duplicate the exact visual appearance, but serve merely as a guide or point of reference.

All GH Commercial carpet tiles and planks must be installed in accordance with AS2455 Parts 1 & 2 (latest version) and the GH Commercial Carpet Tile/Plank Installation Instructions. Chair pads are recommended under office chairs with roller castors to preserve appearance retention, act as a deterrent toward delamination and to prevent premature or accelerated wear. Walk-off tiles from the Tuff Stuff II Collection are recommended at entryways to reduce soiling. ~Test results and certificates are available on request.

*Guarantee is in addition to any rights consumers may have under Australian consumer laws. Terms and conditions apply - for full information in respect to the scope of the guarantee please contact your GH Commercial Account Manager or our Head Office.