

TECHNICAL SPECIFICATIONS

Country of Origin:	China	Colours:	11 Standard
Yarn:	80% Wool / 20% Nylon	Total Product Thickness:	10 (+/- 1.0)mm
Pile Height:	7 (+/- 1.0)mm	Pile Weight:	1290.00g/m ² (38oz)
Backing:	Polypropylene Weft	Installation Method:	Dual Bond Recommended
Notes:	Available in 4 qualities - 34oz, 38oz 42oz and 48oz. Fast Track® minimum order quantity applies = 27lm (100m ²)	Type:	Woven Carpet
Roll Width:	3.66	Pattern Repeat:	Width: 365.76cm Length: 190.50cm (Set Match)
Pitch & Beat Up:	Pitch: 27.6/10 (7/inch) Beat Up: 31.5/10cm (8/inch)		

PERFORMANCE

Anti-Static:	(AATCC 134) $3.5KV$ at 21°C & 20% Relative Humidity
Flammability:	CRF 4.5kW/m ² (Dual Bond)#
Colourfast to light:	(ISO 105-B-02-1994) 5-6
Light Reflectance:	Available on Request
Stain Resistance:	Natural Wool Fibre Stain Resistance
ACCS Rating:	Contract Heavy Duty - 3 Star
Smoke Value:	750% minutes (Dual Bond)
Recommended Adhesive:	Refer to our GH Commercial Adhesive Guide www.ghcommercial.com

SUSTAINABILITY

PVC Minimisation:	PVC Free
Indoor Air Quality:	Green Building Council compliant for VOC emission rate limits
Green Star:	Environmental Certification Scheme (ECS). Level 4
Accreditation:	Manufactured under a quality and environmental system certified and complying with ISO 9001 and ISO 14001 by an accredited certification body.



Contract Heavy Duty - 3 Star



ECS Level 4



Green Building Council



ISO 9001 Quality Management System



ISO 14001 Environment Management System



PVC Free



Fast Track



Wool Blend

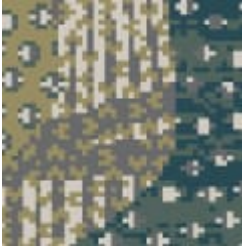


Patterned Cut Pile

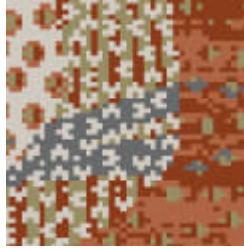


Premium

Lava



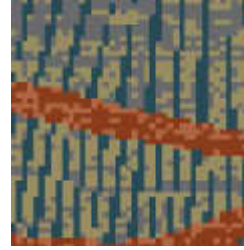
M08-2023-0430



M08-2023-0431



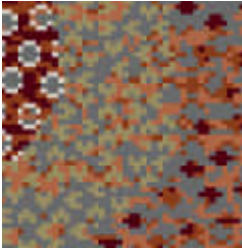
M08-2023-0432



M08-2023-0433



M08-2023-0434



M08-2023-0435



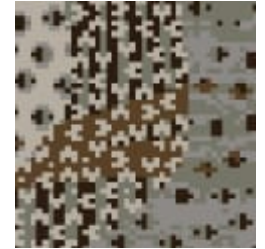
M08-2023-0436



M08-2023-0437



M08-2023-0438



M08-2023-0439



M08-2023-0443

Lava



Specifications and colourations are subject to manufacturing tolerances. As part of the GH Commercial continuous improvement program, GH Commercial reserves the right to change the specifications of or delete colours of this product without notice. While all care is taken, product images may vary in colour due to possible printing process variations. Images do not seek to duplicate the exact visual appearance, but serve merely as a guide or point of reference.

All GH Commercial Woven Carpets must be installed in accordance with the latest AS2455 and the GH Commercial Carpet Installation Instructions.

~Test results and certificates are available on request.

*This warranty is in addition to any rights consumers may have under Australian consumer laws. Terms and conditions apply - for full information in respect to the scope of the warranty please contact your GH Commercial Account Manager or our Head Office.