

Knights Point II



TECHNICAL SPECIFICATIONS

Country of Origin:	Australia	Colours:	8 Standard
Yarn:	100% Statron Plus® Solution Dyed Nylon	Surface Texture:	Level Loop Pile
Gauge:	39.4/10cm (1/10th Gauge)	Total Product Thickness:	5.5 (+/- 1.0)mm
Pile Height:	3 (+/- 1.0)mm	Pile Weight:	680.00g/m ² (20oz)
Backing:	Action Bac®	Installation Method:	Direct Stick, Conventionally Laid
Type:	Commercial Broadloom	Roll Width:	4.00
Pattern Repeat:	1.0cm (w) x 1.25cm (l)		

PERFORMANCE

Anti-Static:	(AATCC 134) $\leq 3.5KV$ at 21°C & 20% Relative Humidity
Flammability:	Meets the requirements of NCC Spec. C1.10 relating to fire hazard properties for flooring in Class 2-9 buildings~
Stain Resistance:	Stain Warden®
Biocontaminant Control:	Bioshield® Antimicrobial Control
ACCS Rating:	Residential Extra Heavy Duty & Stairs - 6 Star, Contract Extra Heavy Duty - 4 Star
Recommended Adhesive:	Refer to our GH Commercial Adhesive Guide www.ghcommercial.com

SUSTAINABILITY

PVC Minimisation:	PVC Free
Indoor Air Quality:	Green Building Council Compliant for VOC emission rate limits
Product Transparency:	Declare Red List Free
Green Star:	Environmental Certification Scheme (ECS). Level 4+ - Certificate #21232
Accreditation:	Manufactured under a quality, environmental and health and safety system certified and complying with ISO 9001, ISO 14001 and ISO 45001 by accredited certification bodies.



Australian Made



PVC Free



Residential Extra Heavy Duty & Stairs - 6 Star



Contract Extra Heavy Duty - 4 Star



ECS Level 4



Statron Plus® SDN



Green Building Council



ISO 9001 Quality Management System



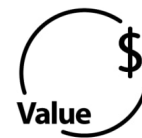
ISO 14001 Environment Management System



AS 4801



Level Loop Pile



Affordable

Knights Point II

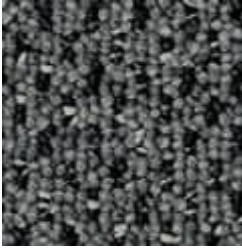


Declare.

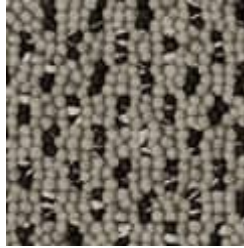
Declare® Red List Free

Declare

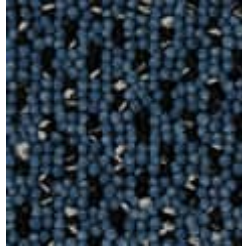
Knights Point II



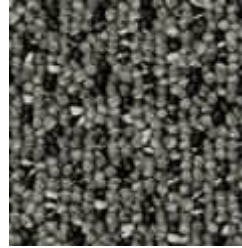
9
Marble



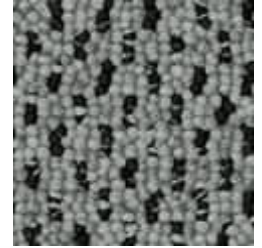
14
Scoria



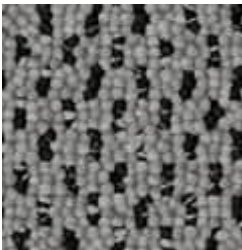
34
Sodalite



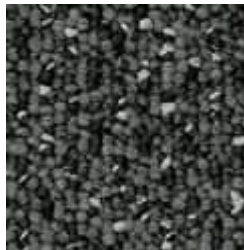
49
Speckle Rock



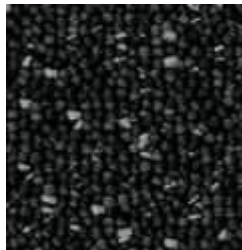
90
Galena



91
Quartzite



97
Mica



99
Onyx

Knights Point II



Specifications and colourations are subject to manufacturing tolerances. As part of the GH Commercial continuous improvement program, GH Commercial reserves the right to change the specifications of or delete colours of this product without notice. While all care is taken, product images may vary in colour due to possible printing process variations. Images do not seek to duplicate the exact visual appearance, but serve merely as a guide or point of reference.

All GH Commercial carpets must be installed in accordance with the latest AS2455 and any relevant GH Commercial Carpet Installation Instructions.
Chair pads are recommended under office chairs with roller castors to preserve appearance retention, act as a deterrent toward delamination and to prevent premature or accelerated wear. Walk-off tiles from the Tuff Stuff II Collection are recommended at entryways to reduce soiling.
~Test results and certificates are available on request.

*This warranty is in addition to any rights consumers may have under Australian consumer laws. Terms and conditions apply - for full information in respect to the scope of the guarantee please contact your GH Commercial Account Manager or our Head Office.