

Iperform 70



TECHNICAL SPECIFICATIONS

Country of Origin:	Belgium	Colours:	26 Standard
Total Product Thickness:	2.15mm	Installation Method:	Direct Stick
Notes:	Stocked locally in NZ for fast lead times	Type:	Vinyl Sheet Flooring
Wear Layer:	0.7mm	Finish:	Matte
Top Layer:	Natural Feel	Protective Coating:	HyperGuard+®
Roll Width:	Width: 2m, Length: 25	Pattern Repeat:	Please refer to swatch images

PERFORMANCE

Flammability:	(EN ISO 9239) CRF 7.7kW/m ²
Colourfast to light:	(EN ISO 105-B02) ≥6
Light Reflectance:	135 - 19.84 785 - 14.69 320 - 22.85 550 - 24.38 130 - 37.02 505 - 17.59 140 - 43.24 180 - 37.75 195 - 8.56 200 - 51.46 380 - 19.92 350 - 19.44 340 - 32.09 770 - 26.18 760 - 27.46 750 - 30.82 745 - 30.73 740 - 30.81 720 - 38.27 775 - 16.06 780 - 26.72 790 - 20.18 792 - 23.49 795 - 18.82 360 - 22.98 797 - 16.55
Classification:	(EN ISO 10874) Residential 23, Commercial 34, Industrial 43
Smoke Value:	EN ISO 9239: 201% min
Dimensional Stability:	(ISO 23999) 0,03% (norm ≤ 0,40%)
Abrasion Rating:	(EN 660-2) Group T
Residual Indentation:	(EN ISO 24343-1) 0,5 (Norm 0,10 mm)
Castor Chair:	(EN ISO 4918) Pass
Sound Reduction:	(EN ISO 717-2) Achieved ΔLw = 7 dB
Slip Resistance:	(AS/NZ 4586-2013) P3, R10
Recommended Adhesive:	Refer to our GH Commercial Adhesive Guide www.ghcommercial.com
Thermal Conductivity:	(EN ISO 10456) 0,157 W/(m.K)
Thermal Resistance:	(EN ISO 12667) 0,014 (m ² .K/W)
Static Load:	(EN 1815) ≤ 2kV (antistatic)

SUSTAINABILITY

Indoor Air Quality:	VOC A+ certification
Accreditation:	Manufactured under a quality and environmental system certified and complying with ISO 9001 and ISO 14001 by an accredited certification body.



ISO 9001 Quality Management System



ISO 14001 Environment Management System



Affordable



European Made



Floorscore



Environmental Product Declaration

Iperform 70



Waterproof



Waterproof Core

Iperform 70



130
Boticelli T82
LRV 46
PR: W 100 X L 120cm^(↑↑)
PTS: W 12.5 X L 60



135
Camargue T04
LRV 29
PR: W 100 X L 120cm^(↑↑)
PTS: W 10 X L VARIOUS



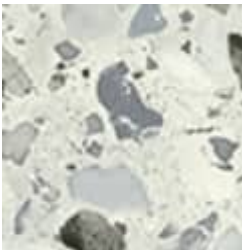
140
Tavel T02
LRV 47
PR: W 99.5 X L 100cm^(↑↑)
PTS: W 12.5 X L 100



180
Toronto T91
LRV 52
PR: W 100 x 100cm^(↑↑)
PTS: W 16.70 X L 100



195
Toronto T99
LRV 9
PR: W 100 X L 100cm^(↑↑)
PTS: W 16.70 X L 100



200
Coronet T94
LRV 52
PR: W 99.50 X L 100cm^(↑↓)
PTS: All-over



320
Calais T34
LRV 36
PR: W 100 X L 120cm^(↑↑)
PTS: W 20 X L 120



340
Tavel T95
LRV 38
PR: W 99.50 X L 100cm^(↑↑)
PTS: W 12.50 X L 100



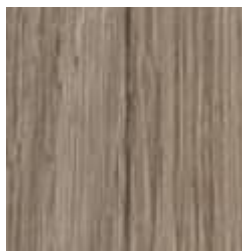
350
Camargue T58
LRV 30
PR: W 100 X L 120cm^(↑↑)
PTS: W 10 X L VARIOUS



360
Toronto T93
LRV 36
PR: W 100 x 100cm^(↑↑)
PTS: W 16.70 X L 100



380
Camargue T62
LRV 34
PR: W 100 X L 120cm^(↑↑)
PTS: W 10 X L VARIOUS



505
Camargue T83
LRV 24
PR: W 100 X L 120cm^(↑↑)
PTS: W 10 X L VARIOUS



550
Tavel T50
LRV 32
PR: W 99.50 X L 100cm^(↑↑)
PTS: W 12.50 X L 100



720
Styx T39
LRV 35
PR: W 199 X L 100cm^(↑↑)
PTS: All-over



740
Gravel T92
LRV 31
PR: W 100 X L 100cm^(↑↑)
PTS: All-over




775

Iperform 70

745

Toronto T96

LRV 28


PR: W 100 x 100cm 

PTS: W 16.70 X L 100

750

Botticelli T93

LRV 40

PR: W 100 X L 120cm 

PTS: W 12.50 X L 60



770

Galibier T92

LRV 37


PR: W 99.50 X L

100cm

PTS: All-over 

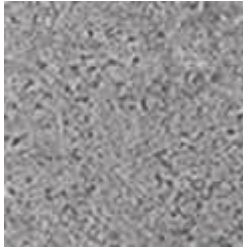
Camargue T91

LRV 15

PR: W 100 X L 120cm 

PTS: W 10 X L

VARIOUS




760

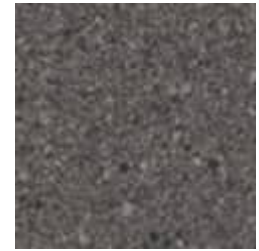
Patagonia T34

LRV 36

PR: W 199 X L 100cm

PTS: W 11.80 X L 


47.20



780

Styx T98

LRV 25


PR: W 199 X L 100cm 

PTS: All-over

785

Pinnacles T98

LRV 14

PR: W 100 X L 100cm 


PTS: All-over



792

Noosa T95

LRV 20


PR: W 199 X L 100cm 

PTS: All-over

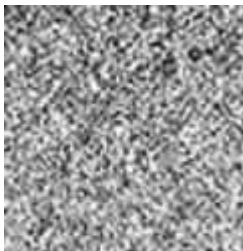
795

Sand T97

LRV 17

PR: W 100 X L 100cm 


PTS: All-over



790

Toronto T87

LRV 22


PR: W 100 x 100cm 

PTS: W 16.70 X L 100

797

Noosa T98

LRV 16

PR: W 199 X L 100cm 

PTS: All-over

Iperform 70



Specifications and colourations are subject to manufacturing tolerances. As part of the GH Commercial continuous improvement program, GH Commercial reserves the right to change the specifications of or delete colours of this product without notice. While all care is taken, product images may vary in colour due to possible printing process variations. Images do not seek to duplicate the exact visual appearance, but serve merely as a guide or point of reference.

Manufacturing Standards:

All specifications and colours are subject to manufacturing tolerances and may be changed or discontinued without notice. Product images are for reference only; actual colours may vary from samples due to printing variations, batch differences, and lighting conditions. All variations are within industry standards.

Natural Product Characteristics:

Hard flooring products may display natural variations in colour, grain, texture, and pattern between batches and individual planks or tiles. These variations are inherent characteristics of the product and do not constitute a manufacturing defect.

Water Resistant/Waterproof Flooring:

Water resistance and waterproof performance are subject to proper installation, ongoing maintenance, and compliance with local building codes and regulatory requirements.

Installation:

All hard flooring must be installed by a qualified professional in accordance with NZS AS 1884:2013, relevant referenced standards for moisture testing and subfloor preparation (e.g. AS/NZS 1080 where applicable), recognised industry best practice, and the applicable Godfrey Hirst installation instructions. Proper subfloor preparation, moisture management, and acclimatisation are essential to ensure product performance and longevity.

Maintenance:

Maintenance requirements vary by product type. Refer to the specific care and maintenance guidelines for your flooring product to ensure optimal performance and longevity.

Product-Specific Notes:

Timber: Nested/random lengths may occur. As this is a natural product, some boxes may include one 'nested' board (i.e. two boards comprising the quoted board length). All boxes will provide the coverage quoted.

Vinyl Sheet: Each colour has a specific pattern repeat and laying direction—refer to the Product Specification Sheet for details. Pay particular attention to the directional arrow to determine if the design should be installed in a standard or reverse direction. LRV indicates Light Reflectance Value, PR is Pattern Repeat, and PTS denotes Plank/Tile Size.

Warranty:

All Godfrey Hirst floors carry a comprehensive warranty supported by New Zealand after-sales service. As a New Zealand manufacturer, we recognise all consumer rights under the Consumer Guarantees Act 1993 and match any equivalent performance guarantee offered in the marketplace at the time of purchase. Commercial warranties are issued project-by-project with specific terms and conditions.

For detailed warranty information, installation guidelines, care instructions, and product characteristics, visit www.godfreyhirst.com or call 0800 500 210. For commercial project-specific warranty enquiries, contact your GH Commercial Account Manager. Test results and certificates available on request.