

TECHNICAL SPECIFICATIONS

Country of Origin:	Australia	Colours:	5 Standard
Yarn:	100% Nylon	Surface Texture:	Patterned Cut Pile
Gauge:	39.4/10cm (1/10th Gauge)	Total Product Thickness:	7 (+/- 1.0)mm
Pile Height:	4.5 (+/- 1.0)mm	Pile Weight:	576.00g/m ² (17oz)
Backing:	Enviro Bac®	Carpet Tiles & Planks Size:	500mm x 500mm
Installation Method:	Direct Stick	Type:	Carpet Tiles and Planks
Units Per Box:	16	m ² per box:	4

PERFORMANCE

Anti-Static:	(AATCC 134) $\leq 3.5KV$ at 21°C & 20% Relative Humidity
Flammability:	Meets the requirements of NCC Spec. C1.10 relating to fire hazard properties for flooring in Class 2-9 buildings~
Colourfast to light:	(ISO 105-B-02-1994) 6-7
Light Reflectance:	Available on Request
Stain Resistance:	Stain Warden®
Biocontaminant Control:	Bioshield® Antimicrobial Control
ACCS Rating:	Contract Extra Heavy Duty - 4 Star
Contract Guarantee:	15 Years Available on Request*
Recommended Adhesive:	Refer to our GH Commercial Adhesive Guide www.ghcommercial.com

SUSTAINABILITY

PVC Minimisation:	PVC Free
Indoor Air Quality:	Green Building Council Compliant for VOC emission rate limits
Product Transparency:	Declare Red List Free
Green Star:	Environmental Certification Scheme (ECS). Level 4+. Achieves 12+ Points meeting Best Practice Requirements
Accreditation:	Manufactured under a quality, environmental and health and safety system certified and complying with ISO 9001, ISO 14001 and ISO 45001 by accredited certification bodies.

AVAILABILITY

Size Options:	250mm x 1000mm carpet plank
Backing Options:	Enviro Bac Plus® cushion backing, Enviro Bac Lite® cushion backing
Other Options:	Textured Loop Pile 22oz, Patterned Cut Pile 35oz, Cut & Loop Pile 23oz

Edgewalk



Australian Made



PVC Free



BPA Free



Pthalate Free



Green Building Council



ISO 9001 Quality Management System



ISO 14001 Environment Management System



AS 4801

Designer Jet®

Designer Jet



Declare® Red List Free



Contract Extra Heavy Duty Designer Jet Carpet Tiles & Planks on Enviro Bac and Enviro Bac Plus - 4 Star

Declare.



Mid Range



ECS Level 4+

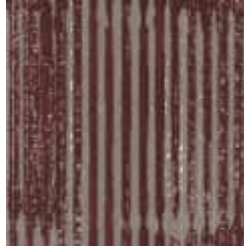


Designer Jet Carpet Tiles with Enviro Bac®

Edgewalk



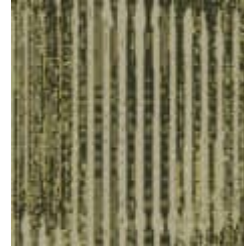
CT6122A-01



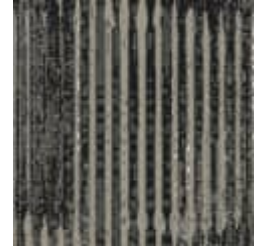
CT6122A-02



CT6122A-03



CT6122A-04



CT6122A-05

Edgewalk



Specifications and colourations are subject to manufacturing tolerances. As part of the GH Commercial continuous improvement program, GH Commercial reserves the right to change the specifications of or delete colours of this product without notice. While all care is taken, product images may vary in colour due to possible printing process variations. Images do not seek to duplicate the exact visual appearance, but serve merely as a guide or point of reference.

All GH Commercial carpet tiles and planks must be installed in accordance with AS2455 Parts 1 & 2 (latest version) and the GH Commercial Carpet Tile/Plank Installation Instructions. Chair pads are recommended under office chairs with roller castors to preserve appearance retention, act as a deterrent toward delamination and to prevent premature or accelerated wear. Walk-off tiles from the Tuff Stuff II Collection are recommended at entryways to reduce soiling. ~Test results and certificates are available on request.

*Guarantee is in addition to any rights consumers may have under Australian consumer laws. Terms and conditions apply - for full information in respect to the scope of the guarantee please contact your GH Commercial Account Manager or our Head Office.