

Decor Twist



TECHNICAL SPECIFICATIONS

Country of Origin:	New Zealand	Colours:	10 Standard
Yarn:	80% Wool / 20% Synthetic	Surface Texture:	Cut Pile Twist
Gauge:	31.5/10cm (1/8th Gauge)	Total Product Thickness:	11 (+/- 1.0)mm
Pile Height:	8 (+/- 1.0)mm	Pile Weight:	1290.00g/m ² (38oz)
Backing:	Jute	Installation Method:	Conventionally Laid
Type:	Residential Broadloom	Roll Width:	3.66

PERFORMANCE

Anti-Static:	(AATCC 134) $\leq 3.5KV$ at 21°C & 20% Relative Humidity
Flammability:	CRF 6.0kW/m ² (Conventionally Laid)~
Light Reflectance:	Available on Request
Stain Resistance:	Natural Wool Fibre Stain Resistance
ACCS Rating:	Residential Extra Heavy Duty & Stairs - 5 Star, Contract Light Duty - 1 Star
Smoke Value:	194% minutes (Conventionally Laid)

SUSTAINABILITY

PVC Minimisation:	PVC Free
Indoor Air Quality:	Green Building Council Compliant for VOC emission rate limits
Product Transparency:	Declare Red List Free
Green Star:	Environmental Certification Scheme (ECS). Level 4 - Certificate #28218
Accreditation:	Manufactured under a quality and environmental system certified and complying with ISO 9001 and ISO 14001 by an accredited certification body.



Made in New Zealand



Declare



PVC Free



Residential Extra Heavy Duty & Stairs - 5 Star



Contract Light Duty - 1 Star



ECS Level 4



Green Building Council



ISO 9001 Quality Management System



ISO 14001 Environment Management System



Wool Blend



Cut Pile Twist



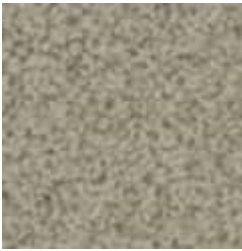
Affordable

Decor Twist

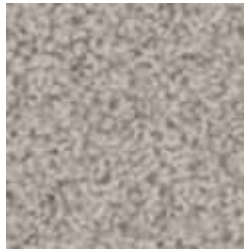


Declare® Red List Free

Decor Twist



9
Jube



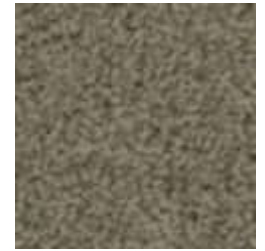
10
Crisp Linen



13
Camel



41
Bisque



76
Cinnamon



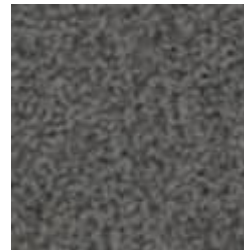
93
Treescape



96
Chalice



911
Sterling



925
Dusk



972
Southern Sky

Decor Twist



Specifications and colourations are subject to manufacturing tolerances. As part of the GH Commercial continuous improvement program, GH Commercial reserves the right to change the specifications of or delete colours of this product without notice. While all care is taken, product images may vary in colour due to possible printing process variations. Images do not seek to duplicate the exact visual appearance, but serve merely as a guide or point of reference.

All GH Commercial carpets must be installed in accordance with the latest AS2455 and any relevant GH Commercial Installation Instructions. ~Test results and certificates are available on request. *This warranty is in addition to any rights consumers may have under Australian consumer laws. Terms and conditions apply - for full information in respect to the scope of the warranty, please contact your GH Commercial Account Manager or our Head Office.