

TECHNICAL SPECIFICATIONS

Country of Origin:	Australia	Colours:	20 Standard
Yarn:	Duracolor® Tricor Solution Dyed Nylon	Surface Texture:	Level Loop Pile
Gauge:	39.4/10cm (1/10th Gauge)	Total Product Thickness:	6 (+/- 1.0)mm
Pile Height:	3.5 (+/- 1.0)mm	Pile Weight:	610.00g/m ² (18oz)
Backing:	Enviro Bac®	Carpet Tiles & Planks Size:	500mm x 500mm
Installation Method:	Direct Stick	Notes:	Creative Spark is best installed using the quarter turn method to minimise the visual appearance of joins.
Type:	Carpet Tiles and Planks	Units Per Box:	20
m ² per box:	5	m ² per pallet:	18
Quickship AU:	Nurturing Nectarine, Cheerful Cherry, Dynamic Dewdrop, Sentimental Steel, Moody Blue, Enchanting Eucalyptus, Playful Pine, Cinnabark, Subtle Sepia, Dreamy Driftwood, Patient Pepper, Gravel Path, Silly Stone, Carbon, Mesmerising Midnight		

PERFORMANCE

Anti-Static:	(AATCC 134) $3.5KV$ at 21°C & 20% Relative Humidity
Flammability:	Meets the requirements of NCC Spec. C1.10 relating to fire hazard properties for flooring in Class 2-9 buildings~
Colourfast to light:	(ISO 105-B-02-1994) 6-7
Light Reflectance:	Available on Request
Stain Resistance:	Duracolor® Tricor - Permanent, Built into fibre
Biocontaminant Control:	EcoSentry Soil Protection
ACCS Rating:	Contract Extra Heavy Duty - 4 Star
Contract Guarantee:	15 Years Available on Request*
Recommended Adhesive:	Refer to our GH Commercial Adhesive Guide www.ghcommercial.com

SUSTAINABILITY

PVC Minimisation:	PVC Free
Indoor Air Quality:	Green Building Council Compliant for VOC emission rate limits
Product Transparency:	Declare Red List Free
Green Star:	Environmental Certification Scheme (ECS) Level 4+. Achieves 12+ Points meeting Best Practice Requirements - Certificate #24424
Accreditation:	Manufactured under a quality, environmental and health and safety system certified and complying with ISO 9001, ISO 14001 and ISO 45001 by accredited certification bodies.

AVAILABILITY

Backing Options:	Enviro Bac Lite® cushion backing, Enviro Bac Plus® cushion backing
------------------	--

Creative Spark



Australian Made

Declare.

SDN Carpet Tiles and Planks on Enviro Bac and Enviro Bac Plus



ISO 9001 Quality Management System



ISO 45001 OHS Management System



ISO 14001 Environment Management System



PVC Free



Green Building Council



Duracolor® TriCor SDN



Premium



Declare® Red List Free



Textured Loop Pile



ECS Level 4+



Contract Extra Heavy Duty - 4 Star

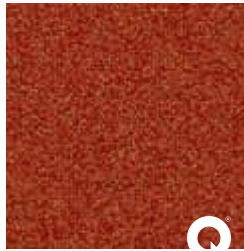


SDN Carpet Tiles with Enviro Bac®

Creative Spark



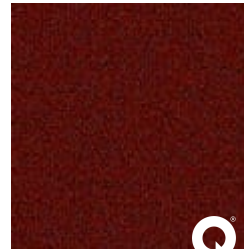
131
Sunny Disposition



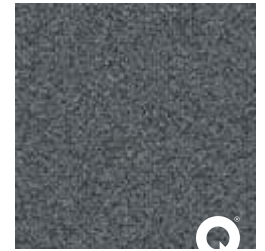
252
Nurturing Nectarine



332
Pondering Petal



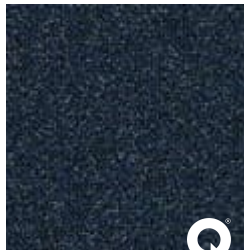
363
Cheerful Cherry



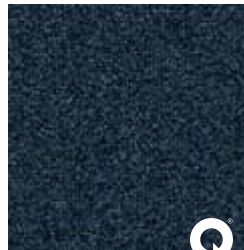
545
Dynamic Dewdrop



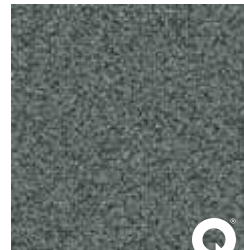
546
Loving Lagoon



569
Sentimental Steel



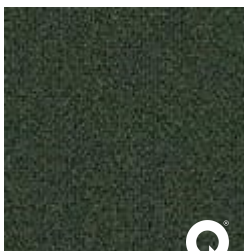
575
Moody Blue



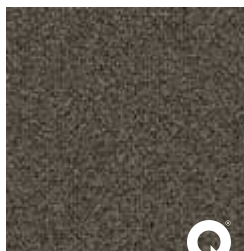
646
Enchanting Eucalyptus



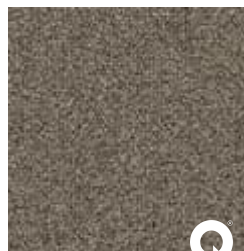
651
Graceful Green



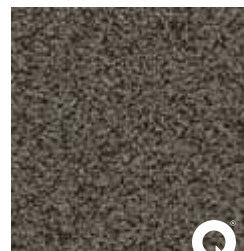
656
Playful Pine



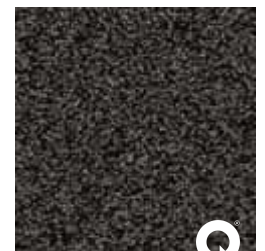
804
Cinnabark



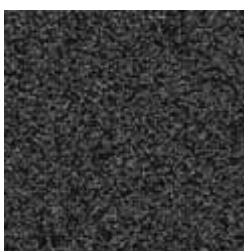
854
Subtle Sepia



858
Dreamy Driftwood



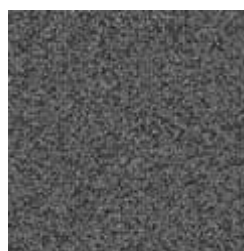
889
Patient Pepper



904



928



949



989



999

Creative Spark



Gravel Path

Mushroom

Silly Stone

Carbon

Mesmerising Midnight

Creative Spark



Specifications and colourations are subject to manufacturing tolerances. As part of the GH Commercial continuous improvement program, GH Commercial reserves the right to change the specifications of or delete colours of this product without notice. While all care is taken, product images may vary in colour due to possible printing process variations. Images do not seek to duplicate the exact visual appearance, but serve merely as a guide or point of reference.

All GH Commercial carpet tiles and planks must be installed in accordance with AS2455 Parts 1 & 2 (latest version) and the GH Commercial Carpet Tile/Plank Installation Instructions. Chair pads are recommended under office chairs with roller castors to preserve appearance retention, act as a deterrent toward delamination and to prevent premature or accelerated wear. Walk-off tiles from the Tuff Stuff II Collection are recommended at entryways to reduce soiling. ~Test results and certificates are available on request.

*Guarantee is in addition to any rights consumers may have under Australian consumer laws. Terms and conditions apply - for full information in respect to the scope of the guarantee please contact your GH Commercial Account Manager or our Head Office.