

TECHNICAL SPECIFICATIONS

Country of Origin:	Australia	Colours:	5 Standard
Yarn:	100% Statron Plus® Solution Dyed Nylon	Surface Texture:	Patterned Textured Loop Pile
Gauge:	47/10cm (1/12th Gauge)	Total Product Thickness:	7.5 (+/- 1.0)mm
Pile Height:	5 (+/- 1.0)mm	Pile Weight:	745.00g/m ² (22oz)
Backing:	Enviro Bac®	Size:	250mm x 1000mm
Installation Method:	Direct Stick or FlexLok® (adhesive free installation) recommended (Ashlar, Herringbone or Basket Weave)	Notes:	Dreamtime Flooring is our design collaboration partner and exclusive distributor of the Here Before Collection, which is made by Godfrey Hirst.
Type:	Carpet Tiles and Planks	Units Per Box:	16
m ² per box:	4	m ² per pallet:	144

PERFORMANCE

Anti-Static:	(AATCC 134) <3.5KV at 21°C & 20% Relative Humidity
Flammability:	Meets the requirements of NCC Spec. C1.10 relating to fire hazard properties for Class 2-9 buildings~
Light Reflectance:	Available on Request
Stain Resistance:	Stain Warden®
Biocontaminant Control:	Bioshield® Antimicrobial Control
ACCS Rating:	Contract Extra Heavy Duty - 4 Star
Recommended Adhesive:	Refer to our GH Commercial Adhesive Guide www.ghcommercial.com

SUSTAINABILITY

PVC Minimisation:	PVC Free
Indoor Air Quality:	Green Building Council Compliant for VOC emission rate limits
Product Transparency:	Declare Red List Free
Environmental Product Declaration:	Environmental Product Declaration in accordance with ISO 14025 and EN 15804+A2
Green Star:	Environmental Certification Scheme (ECS) Level 4+. Achieves 12+ Points meeting Best Practice Requirements - Certificate #24340
Accreditation:	Manufactured under a quality, environmental and health and safety system certified and complying with ISO 9001, ISO 14001 and ISO 45001 by accredited certification bodies.

AVAILABILITY

Size Options:	500mm x 500mm carpet tile
Backing Options:	Enviro Bac Plus® cushion backing, Enviro Bac Lite® cushion backing

Cracked Earth



Australian Made



ISO 14001 Environment Management System



ISO 9001 Quality Management System



Contract Extra Heavy Duty - 4 Star



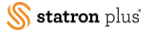
PVC Free



Green Building Council



SDN Carpet Tiles and Planks on Enviro Bac and Enviro Bac Plus



Statron Plus® SDN



Patterned Textured Loop Pile



Declare® Red List Free



Mid Range



Dreamtime Flooring



ECS Level 4+

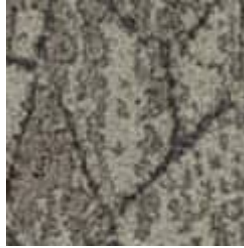


SDN Carpet Tiles with Enviro Bac®

Cracked Earth



535
Jade



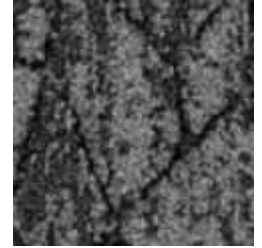
829
Jasper



862
Amber



938
Marble



989
Granite

Cracked Earth



Specifications and colourations are subject to manufacturing tolerances. As part of the GH Commercial continuous improvement program, GH Commercial reserves the right to change the specifications of or delete colours of this product without notice. While all care is taken, product images may vary in colour due to possible printing process variations. Images do not seek to duplicate the exact visual appearance, but serve merely as a guide or point of reference.

All GH Commercial carpet tiles and planks must be installed in accordance with AS2455 Parts 1 & 2 (latest version) and the GH Commercial Carpet Tile/Plank Installation Instructions. Chair pads are recommended under office chairs with roller castors to preserve appearance retention, act as a deterrent toward delamination and to prevent premature or accelerated wear. Walk-off tiles from the Tuff Stuff II Collection are recommended at entryways to reduce soiling. ~Test results and certificates are available on request.

*Guarantee is in addition to any rights consumers may have under Australian consumer laws. Terms and conditions apply - for full information in respect to the scope of the guarantee please contact your GH Commercial Account Manager or our Head Office.