

Colour Theory



TECHNICAL SPECIFICATIONS

Country of Origin:	Australia	Colours:	45 Standard
Yarn:	100% Nylon	Surface Texture:	Patterned Textured Loop Pile
Gauge:	47.2/10cm (1/12th Gauge)	Total Product Thickness:	6.5 (+/- 1.0)mm
Pile Height:	4 (+/-1.0)mm	Pile Weight:	750.00g/m ² (22oz)
Backing:	Enviro Bac®	Size:	500mm x 500mm
Installation Method:	Quarter Turn, Ashlar, Brick, Monolithic, Multi Directional	Type:	Carpet Tiles and Planks
m ² per box:	4.5	m ² per pallet:	162

PERFORMANCE

Anti-Static:	(AATCC 134) $\leq 3.5KV$ at 21°C & 20% Relative Humidity
Flammability:	Meets the requirements of NCC Spec. C1.10 relating to fire hazard properties for flooring in Class 2-9 buildings~
Light Reflectance:	Available on Request
Stain Resistance:	Stain Warden®
Biocontaminant Control:	Bioshield® Antimicrobial Control
ACCS Rating:	Contract Extra Heavy Duty - 4 Star
Recommended Adhesive:	Refer to our GH Commercial Adhesive Guide www.ghcommercial.com

SUSTAINABILITY

PVC Minimisation:	PVC Free
Indoor Air Quality:	Green Building Council Compliant for VOC emission rate limits
Product Transparency:	Declare Red List Free, Declare Red List Free
Green Star:	Environmental Certification Scheme (ECS) Level 4+. Achieves 12+ Points meeting Best Practice Requirements - Certificate #23370
Accreditation:	Manufactured under a quality, environmental and health and safety system certified and complying with ISO 9001, ISO 14001 and ISO 45001 by accredited certification bodies.

AVAILABILITY

Size Options:	250mm x 1000mm carpet plank
Backing Options:	Enviro Bac Plus® cushion backing, Enviro Bac Lite® cushion backing
Other Options:	Cut & Loop Pile 23oz, Patterned Cut Pile 35oz, Patterned Cut Pile 17oz



Australian Made



PVC Free



BPA Free



Declare® Red List Free



Declare



ISO 14001 Environment Management System

Colour Theory



ISO 9001 Quality Management System

Designer Jet®

Designer Jet



Patterned Textured Loop Pile

Declare.

Designer Jet Carpet Tiles & Planks on Enviro Bac and Enviro Bac Plus



Affordable



Contract Extra Heavy Duty - 4 Star



ECS Level 4+



Masterspec Partner

Colour Theory



1700
Cola



1800
Basalt



1900
Chocolate



2300
Lavender



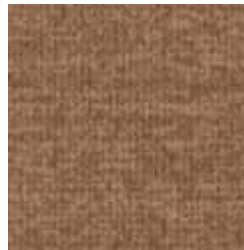
2400
Violet



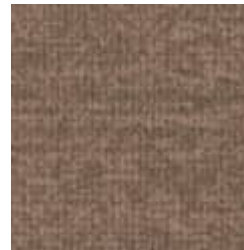
2800
Aubergine



2900
Grape



3600
Canyon



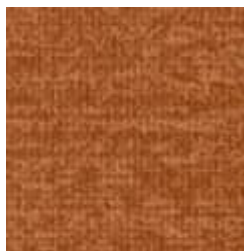
3700
Desert



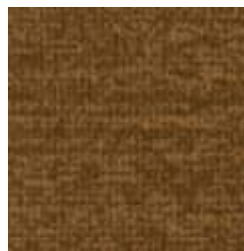
3750
Fawn



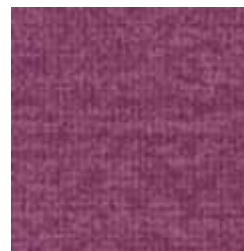
3800
Saffron



3850
Mango



3900
Caramel



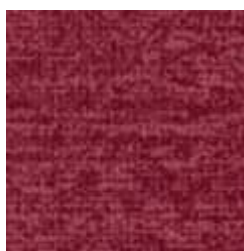
4700
Magenta



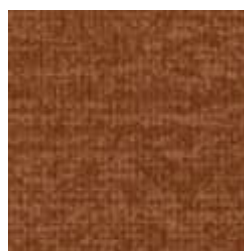
5300
Latte



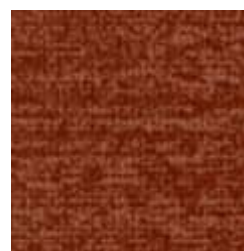
5400



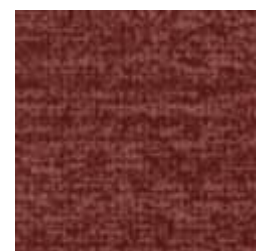
6400



6500



6600



6700

Colour Theory



Mushroom

Cerise

Rust

Tabasco

Cherry



6750
Redwood



6800
Cranberry



6900
Garnet



7300
Steel



7400
Ash



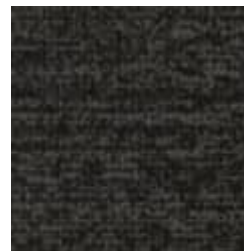
7500
Pewter



7600
Iron



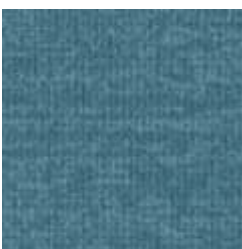
7700
Coal



7800
Shadow



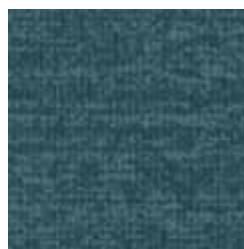
7900
Eclipse



8300
Sky



8400
Bluebell



8500
Marine



8600
Peacock



8650
Denim

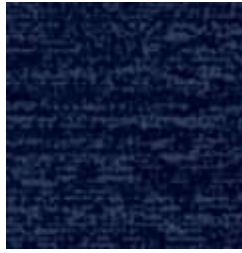
Colour Theory



8700
Sapphire



8750
Ocean



8900
Ink



9300
Slate



9400
Sage



9500
Palm



9600
Olive



9700
Juniper



9800
Pine



9900
Woodland

Colour Theory



Specifications and colourations are subject to manufacturing tolerances. As part of the GH Commercial continuous improvement program, GH Commercial reserves the right to change the specifications of or delete colours of this product without notice. While all care is taken, product images may vary in colour due to possible printing process variations. Images do not seek to duplicate the exact visual appearance, but serve merely as a guide or point of reference.

Manufacturing Standards:

All specifications and colours are subject to manufacturing tolerances and may be changed or discontinued without notice. Product images are for reference only; actual colours may vary from samples due to printing variations, dye lot differences, production runs, and lighting conditions. All variations are within industry standards.

Natural Product Characteristics:

Depending on style and fibre, commercial carpet tiles, planks, and broadloom may develop natural characteristics over time:

Tile-to-Tile Variation: Commercial carpet tiles and planks may display natural variations in colour, texture, and pattern between individual tiles or planks. These variations are inherent characteristics of the product and do not constitute a manufacturing defect.

Permanent Pile Reversal/Shading: Cut pile and cut-and-loop carpets may appear lighter or darker in different areas of the same installation (also called watermarking or pile reversal). This is an inherent characteristic of these carpet styles and does not constitute a manufacturing defect.

Tracking: Footprint impressions may occur on plush cut pile surfaces, especially in high-traffic commercial areas. Vacuuming removes these marks, though they may reappear with use.

Other characteristics: Panelling, shift lines, or phasing may develop depending on carpet style and fibre.

Pattern Matching:

Patterned carpet tiles and planks naturally vary in size and appearance. Skilled installers will achieve close pattern alignment in most cases, though exact matches cannot be guaranteed.

Installation:

All GH Commercial carpet tiles, planks, and broadloom carpets must be professionally installed following AS/NZS 2455.1:2007 standards and relevant GH Commercial Installation Instructions. Proper subfloor preparation, moisture testing, and adhesive application are essential for product performance and warranty validation.

Maintenance:

Regular vacuuming and periodic professional cleaning are essential to maintain appearance and performance. Chair pads are recommended under office chairs with roller castors to preserve appearance retention, prevent delamination, and avoid premature wear. Walk-off tiles from the Tuff Stuff II Collection are recommended at entryways to reduce soiling. Refer to specific maintenance guidelines for your product to ensure optimal performance in commercial environments.

Warranty:

All GH Commercial carpet products carry a warranty supported by New Zealand after-sales service. Commercial warranties are provided in addition to any rights consumers may have under New Zealand consumer law and are issued on a project-by-project basis with specific terms and conditions.

For detailed warranty information, installation guidelines, care instructions, and product characteristics, visit www.ghcommercial.com or call 0800 500 210. For project-specific warranty enquiries, contact your GH Commercial Account Manager.

Test results and certificates available on request.