

# Base Layer



## TECHNICAL SPECIFICATIONS

Country of Origin:	Australia	Colours:	8 Standard
Yarn:	Duracolor® Tricolor Solution Dyed Nylon	Surface Texture:	Patterned Textured Loop Pile
Gauge:	47.2/10cm (1/12th Gauge)	Total Product Thickness:	6.5 (+/- 1.0)mm
Pile Height:	4 (+/-1.0)mm	Pile Weight:	610g/m <sup>2</sup> (18oz)
Backing:	Enviro Bac®	Size:	500mm x 500mm
Installation Method:	Quarter Turn, Ashlar, Brick	Type:	Carpet Tiles and Planks
Units Per Box:	18	m <sup>2</sup> per box:	4.5
m <sup>2</sup> per pallet:	162		

## PERFORMANCE

Anti-Static:	(AATCC 134) &lt;3.5KV at 21°C & 20% Relative Humidity
Flammability:	Meets the requirements of the NCC Spec. C1.10 relating to fire hazard properties for flooring in class 2-9 buildings (including health and aged care buildings). Meets the requirements of the New Zealand Buildings Code Section C3 - Fire Affecting Areas Beyond the Fire Source.
Colourfast to light:	(ISO 105-B-02-1994) 6-7
Light Reflectance:	Available on Request
Stain Resistance:	Duracolor® Tricolor - Permanent, Built into fibre
Biocontaminant Control:	EcoSentry Soil Protection
ACCS Rating:	Contract Extra Heavy Duty - 4 Star
Recommended Adhesive:	Refer to our GH Commercial Adhesive Guide <a href="http://www.ghcommercial.com">www.ghcommercial.com</a>

## SUSTAINABILITY

PVC Minimisation:	PVC Free
Indoor Air Quality:	Green Building Council Compliant for VOC emission rate limits
Product Transparency:	Declare Red List Free
Environmental Product Declaration:	Environmental Product Declaration in accordance with ISO 14025 and EN 15804+A2
Green Star:	Environmental Certification Scheme (ECS). Level 4+. Achieves 12+ Points meeting Best Practice Requirements - Certificate #25292
Accreditation:	Manufactured under a quality, environmental and health and safety system certified and complying with ISO 9001, ISO 14001 and ISO 45001 by accredited certification bodies.

## AVAILABILITY

Backing Options:	Enviro Bac Lite® cushion backing, Enviro Bac Plus® cushion backing
------------------	--

# Base Layer



Australian Made

**Declare.**

SDN Carpet Tiles and Planks on Enviro Bac and Enviro Bac Plus



ISO 9001 Quality Management System



ISO 45001 OHS Management System



ISO 14001 Environment Management System



PVC Free



Green Building Council



Duracolor® TriCor SDN



Premium



Declare® Red List Free



Textured Loop Pile



ECS Level 4+

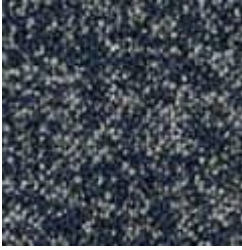


Contract Extra Heavy Duty - 4 Star

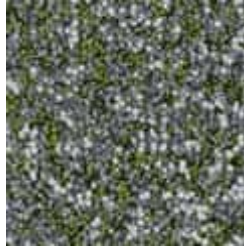


SDN Carpet Tiles with Enviro Bac®

# Base Layer



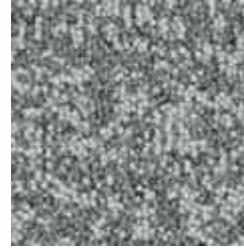
593  
Wellspring



626  
Meadow



868  
Yarrow



924  
Moraine



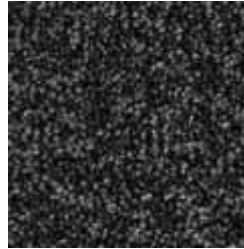
957  
Freshwater



958  
Seedbed



959  
Peppercorn



989  
Basalt

# Base Layer



Specifications and colourations are subject to manufacturing tolerances. As part of the GH Commercial continuous improvement program, GH Commercial reserves the right to change the specifications of or delete colours of this product without notice. While all care is taken, product images may vary in colour due to possible printing process variations. Images do not seek to duplicate the exact visual appearance, but serve merely as a guide or point of reference.

All GH Commercial carpet tiles and planks must be installed in accordance with AS2455 Parts 1 & 2 (latest version) and the GH Commercial Carpet Tile/Plank Installation Instructions. Chair pads are recommended under office chairs with roller castors to preserve appearance retention, act as a deterrent toward delamination and to prevent premature or accelerated wear. Walk-off tiles from the Tuff Stuff II Collection are recommended at entryways to reduce soiling. ~Test results and certificates are available on request.

\*Guarantee is in addition to any rights consumers may have under Australian consumer laws. Terms and conditions apply - for full information in respect to the scope of the guarantee please contact your GH Commercial Account Manager or our Head Office.