

TECHNICAL SPECIFICATIONS

Country of Origin:	New Zealand	Colours:	10 Standard
Yarn:	80% Wool / 20% Synthetic	Surface Texture:	Cut Pile Twist
Gauge:	31.5/10cm (1/8th Gauge)	Total Product Thickness:	9.5 (+/- 1)mm
Pile Height:	6.5 (+/- 1)mm	Pile Weight:	983.00g/m ² (29oz)
Backing:	Jute	Installation Method:	Conventional, Dual Bond or Direct Stick
Notes:	Also available in 38oz (Decor Twist) or 48oz (Resolution)	Type:	Residential Broadloom
Roll Width:	3.66		

PERFORMANCE

Anti-Static:	(AATCC 134) $\leq 3.5KV$ at 21°C & 20% Relative Humidity
Flammability:	Meets the requirements of NCC Spec. C1.10 relating to fire hazard properties for flooring in Class 2-9 buildings (including health and aged care buildings)~
Light Reflectance:	Available on Request
Stain Resistance:	Natural Wool Fibre Stain Resistance
Contract Warranty:	5 Year Contract Guarantee Available on Request*

SUSTAINABILITY

PVC Minimisation:	PVC Free
Indoor Air Quality:	Green Building Council compliant for VOC emission rate limits
Product Transparency:	Declare Red List Free
Green Star:	Environmental Certification Scheme (ECS). Level 4 - Certificate #14250
Accreditation:	Manufactured under a quality and environmental system certified and complying with ISO 9001 and ISO 14001 by an accredited certification body.



Made in New Zealand



Declare



Green Building Council



ISO 9001 Quality Management System



ISO 14001 Environment Management System



ECS Level 4

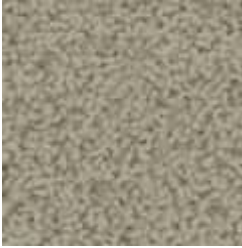


Cut Pile Twist

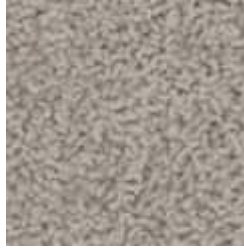


Wool Blend

Avignon



9
Tasman



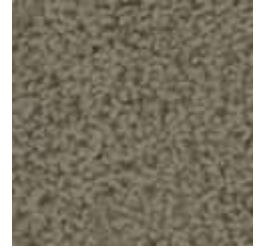
10
Medieval



13
Provincial



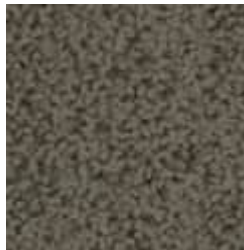
41
Amora



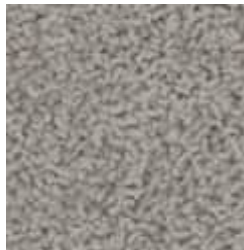
76
Blaxland



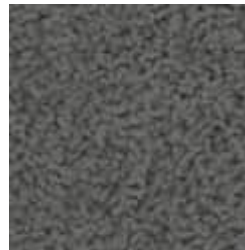
93
Provence



96
Vintage



911
Rhone



929
Popes Palace



972
Cobblestone

Avignon



Specifications and colourations are subject to manufacturing tolerances. As part of the GH Commercial continuous improvement program, GH Commercial reserves the right to change the specifications of or delete colours of this product without notice. While all care is taken, product images may vary in colour due to possible printing process variations. Images do not seek to duplicate the exact visual appearance, but serve merely as a guide or point of reference.

All GH Commercial carpets must be installed in accordance with the latest AS2455 and any relevant GH Commercial Installation Instructions. ~Test results and certificates are available on request. *This guarantee is in addition to any rights consumers may have under Australian consumer laws. Terms and conditions apply - for full information in respect to the scope of the guarantee, please contact your GH Commercial Account Manager or our Head Office.