

## TECHNICAL SPECIFICATIONS

Country of Origin:	Australia	Colours:	10 Standard
Yarn:	100% Solution Dyed Nylon	Surface Texture:	Cut Pile Twist
Gauge:	39.4/10cm (1/10th Gauge)	Total Product Thickness:	14 (+/- 1.0)mm
Pile Height:	12 (+/- 1.0)mm	Pile Weight:	2034.00g/m <sup>2</sup> (60oz)
Backing:	EnduraBac®	Installation Method:	Conventionally Laid
Type:	Residential Broadloom	Roll Width:	3.66
Pattern Repeat:	Not Applicable		

## PERFORMANCE

Anti-Static:	(AATCC 134) <math>\leq 3.5KV</math> at 21°C & 20% Relative Humidity
Flammability:	Meets the requirements of the NCC Spec. C.10 relating to fire hazard properties for flooring in class 2-9 buildings (excluding health and aged care buildings). Meets the requirements of the New Zealand Building Code Section C3 - Fire Affecting Areas Beyond the Fire Source.
Light Reflectance:	Available on Request
Stain Resistance:	Stain Block®
ACCS Rating:	Residential Extra Heavy Duty & Stairs - 5 Star, Contract Medium Duty - 2 Star

## SUSTAINABILITY

PVC Minimisation:	PVC Free
Indoor Air Quality:	Green Building Council Compliant for VOC emission rate limits
Product Transparency:	Declare Red List Free
Green Star:	Environmental Certification Scheme (ECS). Level 4+. Achieves 12+ Points meeting Best Practice Requirements - Certificate #22195
Accreditation:	Manufactured under a quality, environmental and health and safety system certified and complying with ISO 9001, ISO 14001 and ISO 45001 by accredited certification bodies.



Australian Made



PVC Free



Residential Extra Heavy Duty & Stairs - 5 Star



Contract Medium Duty - 2 Star



Green Building Council



ISO 9001 Quality Management System



ISO 14001 Environment Management System



Level Loop Pile



Declare



ISO 45001 OHS Management System



Declare® Red List Free



Mid Range

# Annapolis



ECS Level 4+

# Annapolis



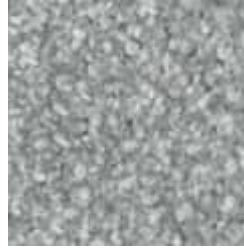
500  
Mayo



507  
Millersville



510  
State Circle



703  
Gambrills



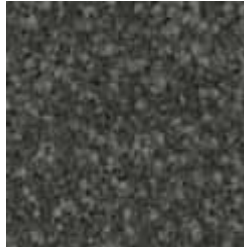
706  
Crofton



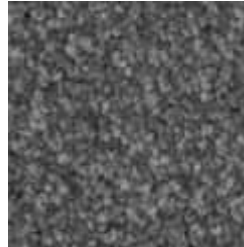
715  
Riva



717  
Odenton



735  
Eastport



736  
West Street



780  
Edgewater

# Annapolis



Specifications and colourations are subject to manufacturing tolerances. As part of the GH Commercial continuous improvement program, GH Commercial reserves the right to change the specifications of or delete colours of this product without notice. While all care is taken, product images may vary in colour due to possible printing process variations. Images do not seek to duplicate the exact visual appearance, but serve merely as a guide or point of reference.

All GH Commercial carpets must be installed in accordance with the latest AS2455 and any relevant GH Commercial Installation Instructions. ~Test results and certificates are available on request. \*This warranty is in addition to any rights consumers may have under Australian consumer laws. Terms and conditions apply - for full information in respect to the scope of the warranty, please contact your GH Commercial Account Manager or our Head Office.